

We love precision



AUTOMATIC TURNED PARTS

Ernst Moll
&
Söhne

We love precision



We love precision



Precision turned parts from Solingen of the highest certified quality

We want to ensure that you and your customers are completely happy. To achieve this, we need 100% quality at an adequate price, completion by the deadline, a service-oriented attitude and confidence. These key factors are vital to the core business and thus, to your success.

We would like to introduce ourselves as a supplier of precision turned parts and present our range of services, for we know how to satisfy your requirements and those of your customers in every possible way.

The label **Solingen** – stands for the highest quality in the metal industry, and we are happy to be a part of that label.

We have been manufacturing our products since 1900 - by now in the fifth generation

Initially, our customers were local companies and the world-renowned cutlery industry based in Solingen.

In the 1960s and 1970s, production increasingly shifted towards the automotive industry.

Company location: Mühlenstraße 19, D-42699 Solingen
3.000 m² of production, office and storage area





Range of services

On a total area of 3.000 m² we have state-of-the-art CNC single-spindle and multi-spindle turning machines. With these machines we process diverse materials, and we manufacture complex turned parts of 10 - 100 mm with very low tolerances.

Machine park:

Turning machine

- Index
- Schütte
- DMG
- Nakamura
- Ergomat
- Lico
- Weiler

Manufacturing center

- DMG



Materials

- Machining steel: z. B. 11SMnPb30+C, 11SMn30+C
- Bright steel: z. B. S235 (St 37), S355 (St 52) C15, C35, C45, 42CrMo4, 16MnCr5
- Aluminium: z. B. EN AW-6082, EN AW-6026, EN AW-6064, EN AW-2007
- Brass: z. B. MS58
- Stainless: z. B. 1.4301, 1.4305, 1.4057
- Plastics: z. B. POM, PP, PA
- Various tubes
- High-tensile materials: z. B. ETG 88, ETG 100

and many more.

Source sections

- Round steel
- Square
- Hexagon
- Special sections on request

Usually, we have all materials in stock so that we can respond as soon as possible.



Product specifications

Manufacturing possibilities:

- CNC turned parts of 10 - 100 mm
- Multi-spindle turned parts of 10 - 51 mm

Production batches:

- Prototypes
- First samples / pilot series
- Small-scale series
- Large-scale series
- Mass production

Production parts according to your specifications
or according to samples.

Provision of expert advice and planning support.

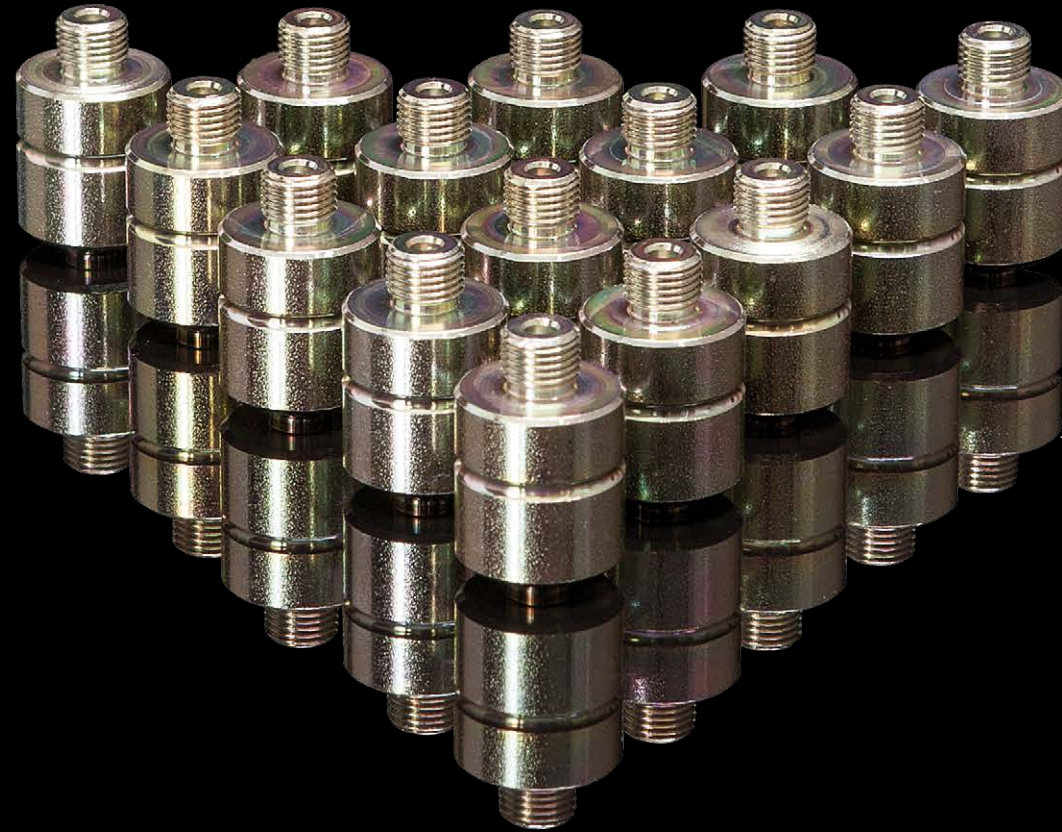


CNC turned part, Ø 40 mm, made of
high-strength special steel, ETG 100

Further processing options

- Deburring
- Hardening
- Hardening and tempering
- Galvanizing
- Thick film passivation
- Nickel plating
- Chromium plating
- Coating (Zn/Ni, Zn/Fe)
- Anodizing
- Hard anodizing
- Burnishing
- Rotofinishing
- Thread rolling

Please contact us for further information.



CNC turned part, galvanized, Ø 21 mm,
with fine-pitch thread

*Complex turned parts of the highest
precision – an extract*



CNC turned part, Ø 15 mm,
decorative element, high surface quality

Quality management – certified quality

With our highly motivated staff that constantly get further training,
a state-of-the-art machine park and our in-house quality
management we ensure consistent quality – for all production
batches.



CNC turned part, Ø 28 mm,
complex machining (turning / milling)
in one operation

Service + Logistics

- Packaging according to the number of items and as per specification (this is also feasible in terms of wages)
- KANBAN delivery
- Reusable packaging to reduce costs and preserve the environment
- Pre-assembly as agreed
- Call-off via remote data transmission
- Framework contracts



We look after your product with great passion - from the very beginning to punctual delivery at your premises!

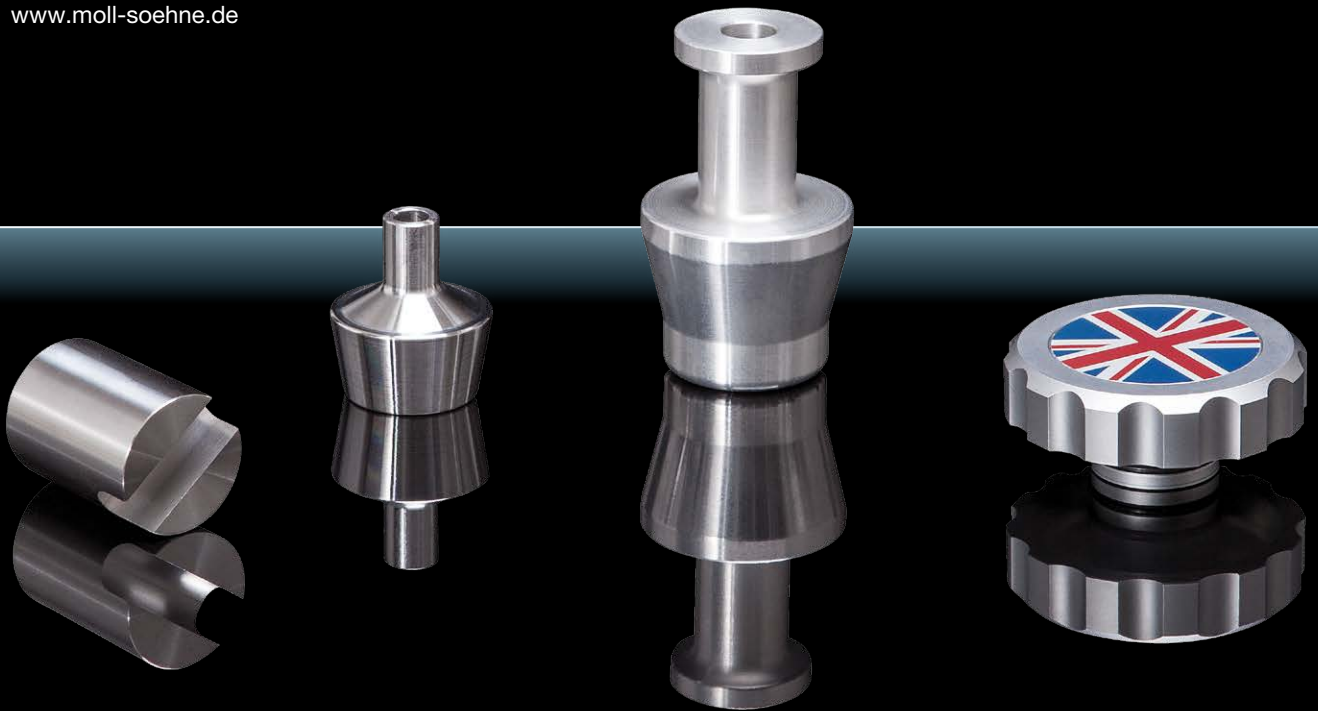
That's what we stand for

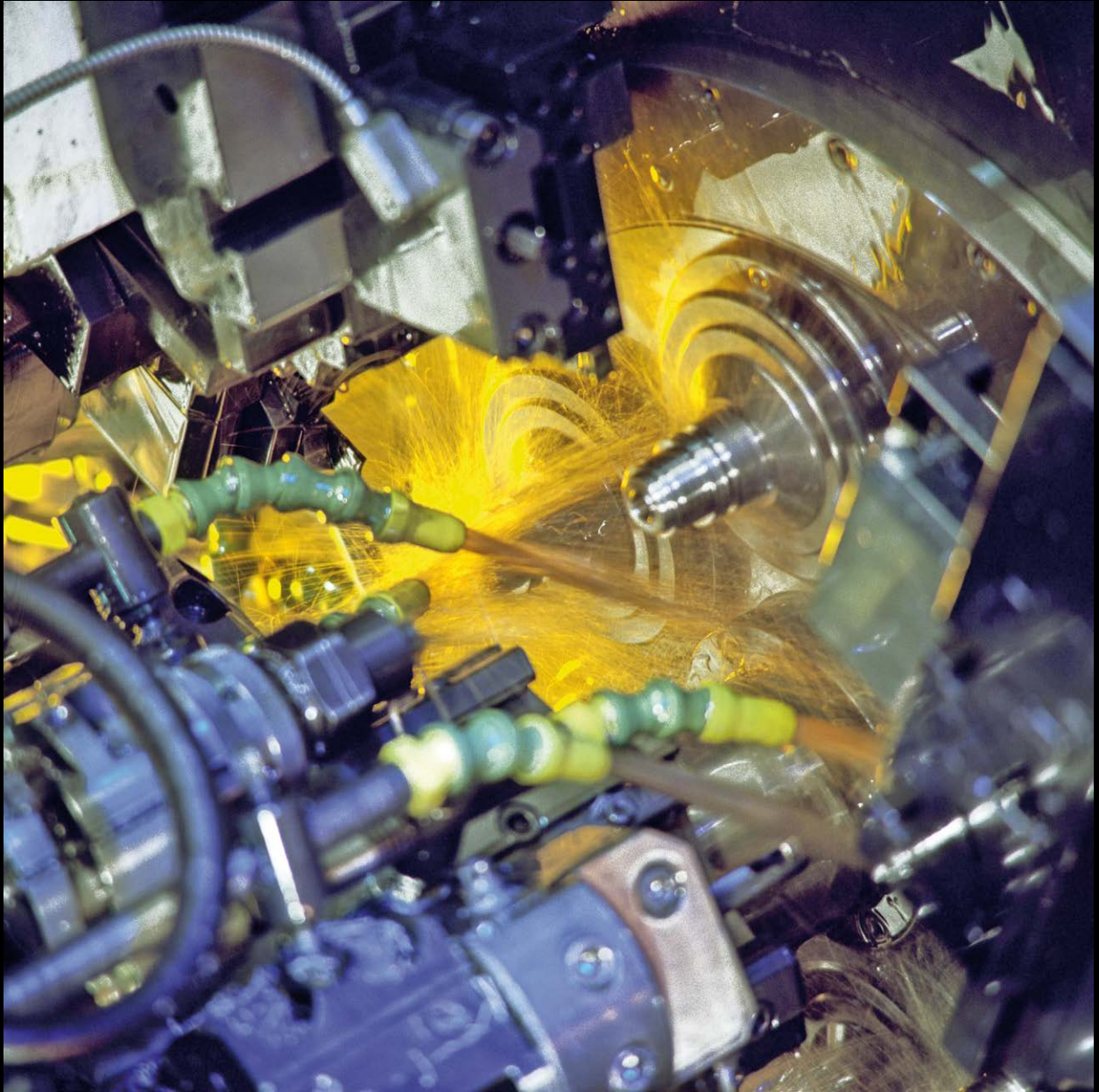
Thomas Moll, Tim Moll & Alexander Moll

Ernst Moll & Söhne GmbH
Mühlenstraße 19
42699 Solingen

Telefon (02 12) 22 32 70
Telefax (02 12) 22 32 72 - 2

info@moll-soehne.de
www.moll-soehne.de





We love precision